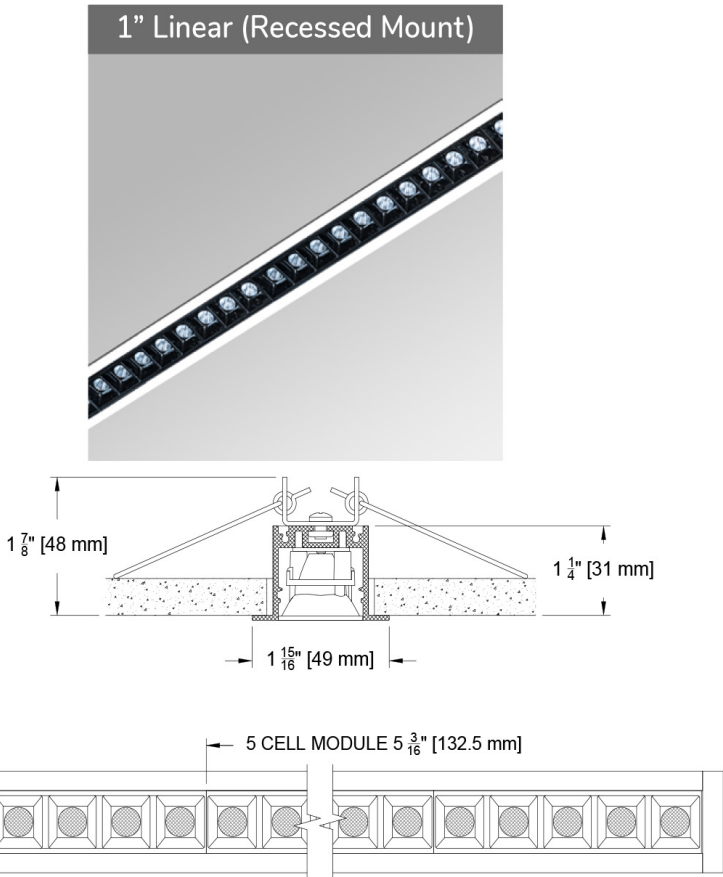


The Slice Family

Illuminate your space with precision Slices of glare free light. The Slice family offers linear 1" and 2" wide profiles in recessed and surface options. The 1" recessed delivers over 1700 lumens per foot with a modular design allowing continuous light of 1" square cells to your specified length. The unobtrusive fixture features incredibly low glare values (UGR) ≥10. Offered with multiple flange finishes, 3 CCTs, 2 outputs and 3 beam options, the slice 1" packs a bunch in a small footprint.



PROJECT: TYPE:  
SPECIFIER: DATE:

Key Points (SL1DC-MCFRC)

- Trim
- 1" cells arrayed in 5 cell increments up to your specified length
  - 14 available trim flange finishes+ custom/RAL available
  - Flange construction integral with housing
- Source / Optics
- 3 beam spreads - 15°, 30° and 45°
  - Up to 1700 Lumens/foot
  - 60+ lumens per watt/foot
  - Ultra low glare with UGR values <10
  - <3 MacAdam Steps (<3 SDCM)
  - CCT offerings - 2700k, 3000k, 3500k
  - 90+ CRI and 50+ R9
  - Supports CA Title 24 part 6 compliance meeting JA8 requirements
  - Lifetime: L70B50>55,000 hours at 40°C Ambient

- Housing
- Lengths longer than 8' are assembled in the field with engineered joiners
  - Profile allows continuous light from 5 1/4" to your desired length in 5 cell increments.
  - Damp listed
  - IC/Airtight supporting CA Title 24 part 6 compliance to JA8 requirements

- Driver And Control
- Remote driver mounting required
  - 0.1% dimming availalbe in 0-10 or DALI-2 protocols
  - Flicker Free to IEEE 1789-2015 (low risk to no risk)
  - Universal 120v to 277v

Slice 1" Multicell Linear Downlight - SO6 (6 Watt System)

1" Slice		Length		Delivered Lumens		
Modules	Cells	US (in)	Metric (mm)	15°	30°	45°
N/A	1	1.1	27.1	98.5	109	104.8
1	5	5	136	493	542	523
2	10	11	271	985	1090	1048
3	15	16	407	1478	1635	1572

Slice 1" Multicell Linear Downlight - SO11 (11 Watt System)

Modules	Cells	US (in)	Metric (mm)	15°	30°	45°
N/A	1	1.1	27.1	133.7	147.6	146.7
1	5	5	136	669	749	736
2	10	11	271	1337	1476	1467
3	15	16	407	2006	2214	2201

Ordering Codes

PROJECT:

SPECIFIER:

DATE:

TYPE:

QUANTITY:

Ordering Code Example: SL1DC-MCFRC-AF-30-SO13-30-45-SY1-P16

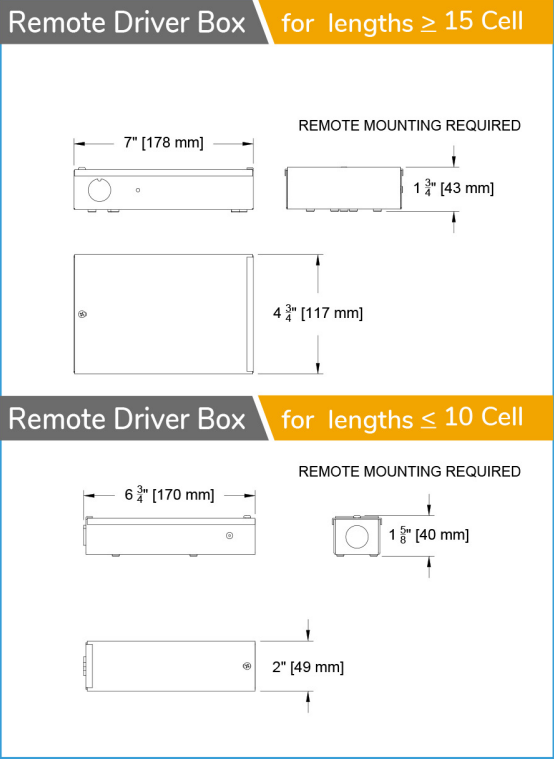
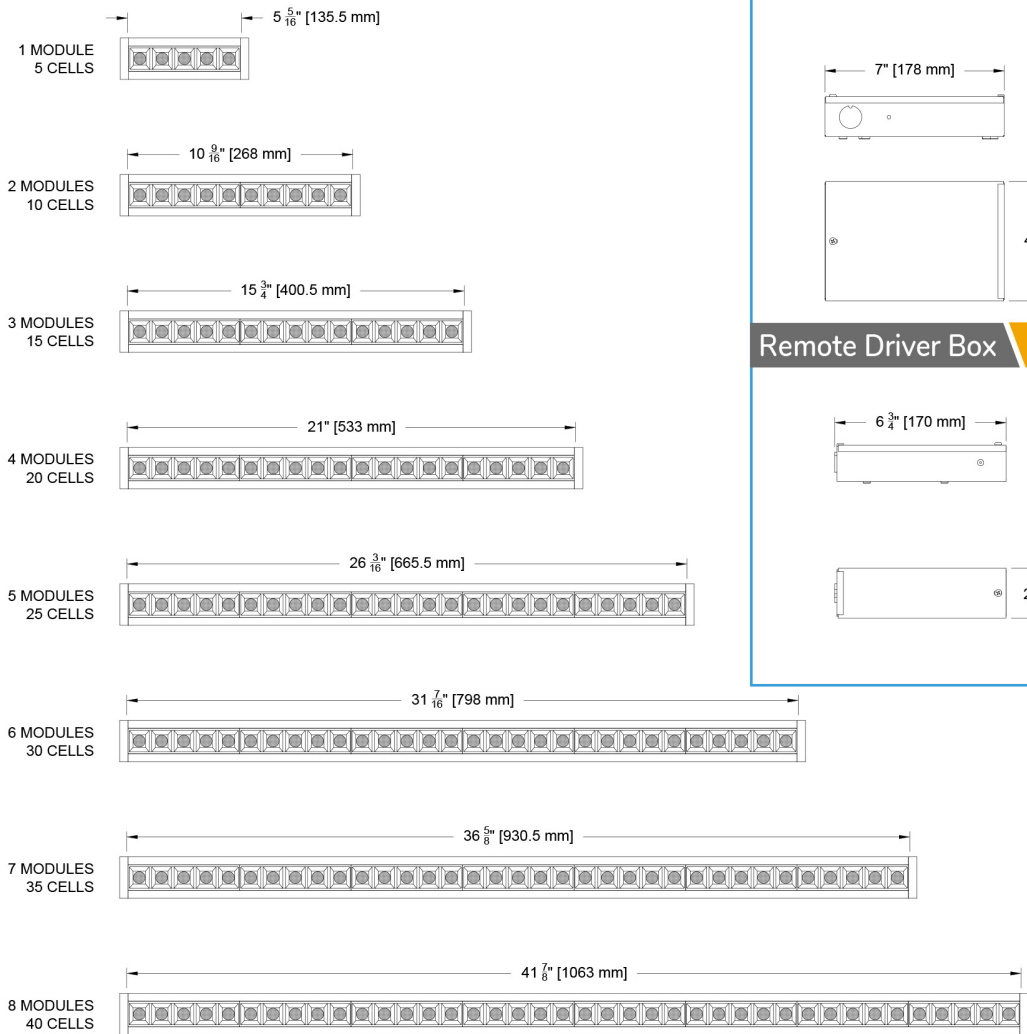
FIXTURE	MOUNTING	CELLS	SOURCE / WATTS	CCT	BEAM	DRIVER / CONTROL	TRIM FINISH	ACCESSORIES
SL1DC-MCFRC								
Slice 1" Continuous Linear Recessed Multicell Downlight	<div>Flanged Housings</div> <div>AF Supports CA T24 part 6 compliance meeting JA8 Requirements</div>	<div>5 5 5/16" (135.5MM)</div> <div>10 10 9/16" (268mm)</div> <div>15 15 3/4" (400.5mm)</div> <div>20 21" (533mm)</div> <div>25 26 3/16" (665.5mm)</div> <div>30 31 7/16 (798mm)</div> <div>35 36 5/8" (930.5mm)</div> <div>40 41 7/8" (1063mm)</div> <div>-- specify total # of cells in 5 cell increments if over 40 cells^</div> <div>^ Lengths &gt; 96" are shipped in 96" sections and assembled with engineered joiner</div>	<div>SO6 6W/ft* 1635Lm/ft* 90+CRI, 50+R9 Specialty Board</div> <div>SO13 11W/ft* 2214Lm/ft* 90+CRI, 50+R9 Specialty Board</div> <div>*Delivered Lumens based on tests performed at 3000K w/ 30° beam angle</div> <div>Supports CA T24 part 6 compliance meeting JA8 requirements</div>	<div>27 2700K</div> <div>30 3000K</div> <div>35 3500K</div>	<div>15 Spot</div> <div>30 Narrow Flood</div> <div>45 Flood</div>	<div>SY1 0-10* 1.0%, UNV (120-277V) linear</div> <div>SY2 0-10* 1.0%, UNV (120-277V) log</div> <div>EldoLED</div> <div>E1 0-10 0.1%, UNV (120-277V) log</div> <div>E2 DALI-2 0.1%, UNV (120-277V) log</div> <div>E3 0-10 0.1%, UNV (120-277V) linear</div> <div>Note: Remote driver required for all fixture lengths. See Electrical Guide for wire run distances</div>	<div>Standard</div> <div>B Black Paint</div> <div>Optional</div> <div>W White Paint</div> <div>PXX Specialty Paint Color*</div> <div>P01-P15</div> <div>C Custom/RAL Color*</div> <div>Note: Baffle is black only *See Finish Guide</div>	<div>CP Chicago Plenum</div>

Fixture Lengths

Standard lengths are shown below. Longer continuous runs are available. Simply specify the total number of cells, in 5 cell increments, for lengths longer than 40 cells. Fixture Length is calculated with a 5 cell module = 132.5mm (5.33")+ 3mm (0.12") for end cap thickness.

SL1DC- Standard Modular Configurations ( 5 cell runs)

(SL1DC-MCFRC-)

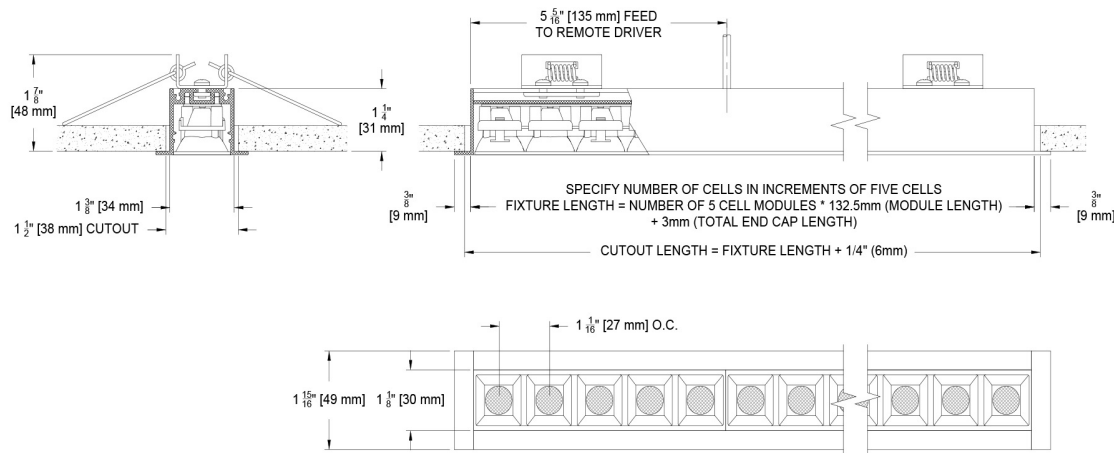


Ceiling Cutouts and Dimensions

For lengths over 40 cells, a submittal drawing is required. Refer to "Length" values in tables or "Fixture Length" page for "Cutout Length" dimension.

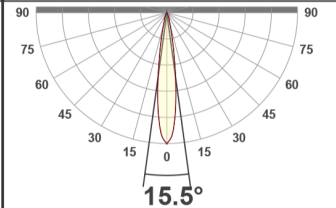
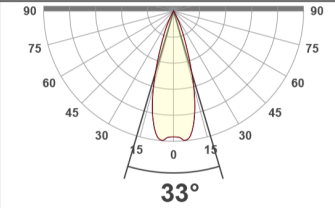
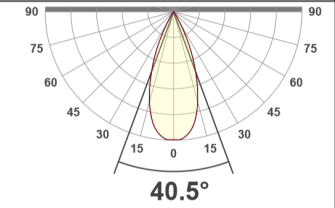
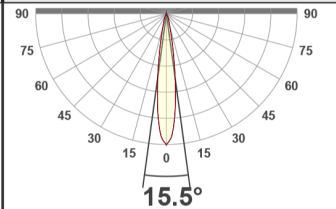
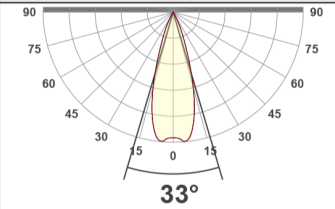
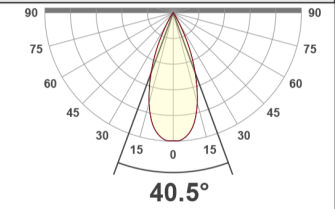
SL1DC- Recessed Mount Multicell Housing RC

(SL1DC-MCFRC-)



Photometric Table

Values and files shown are based on delivered lumens and system watts for a 5-cell module at 5.25" (133 mm). Data for 10-cell and 15-cell modules can be approximated by multiplying by 2 or 3, respectively. All data is based on goniometer measurements of production-representative product at 3000K CCT with a black baffle, and may vary by ±10% from the LED manufacturer's rated flux range.

Slice 1" Multicell Linear Downlight - S06 (6 Watt System)						
1" Slice		Length		Delivered Lumens		
Modules	Cells	US (in)	Metric (mm)	15°	30°	45°
N/A	1	1.1	27.1	98.5	109	104.8
1	5	5	136	493	542	523
2	10	11	271	985	1090	1048
3	15	16	407	1478	1635	1572
CCT Multiplier						
CCT	Citizen					
2700	0.95					
3000	1.00					
3500	1.05					
4000	1.1					
Slice 1" Multicell Linear Downlight - S011 (11 Watt System)						
1" Slice		Length		Delivered Lumens		
Modules	Cells	US (in)	Metric (mm)	15°	30°	45°
N/A	1	1.1	27.1	133.7	147.6	146.7
1	5	5	136	669	749	736
2	10	11	271	1337	1476	1467
3	15	16	407	2006	2214	2201
						

Color Data

All data is based from goniometer measurements of production representative product. All lumen values can vary +/- 10% from LED manufacturer rated data range. Measurements at 3000 CCT unless otherwise noted.

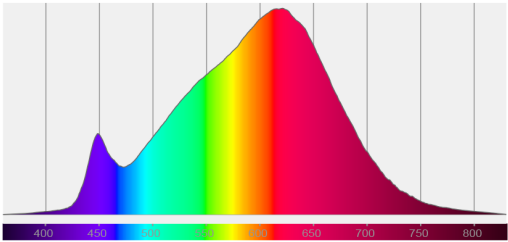
SO6 & SO11

6W & 11W Color Data

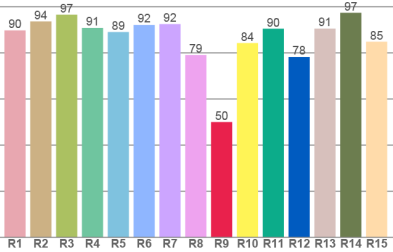
SO6 - 15°



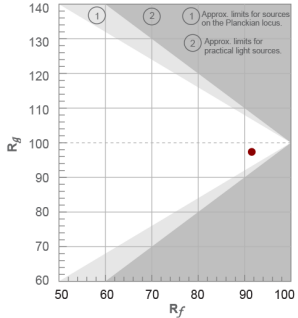
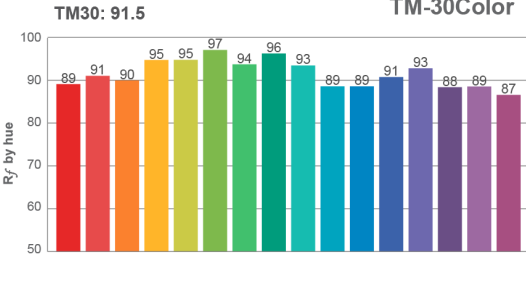
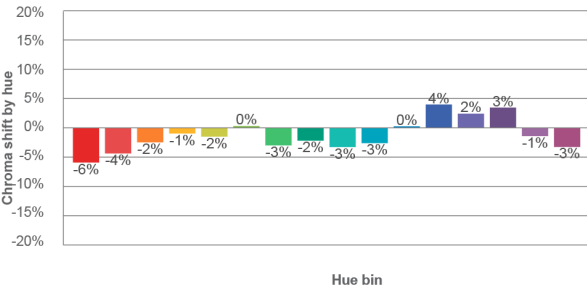
Spectra



CRI: 90.4 (R1-R8)



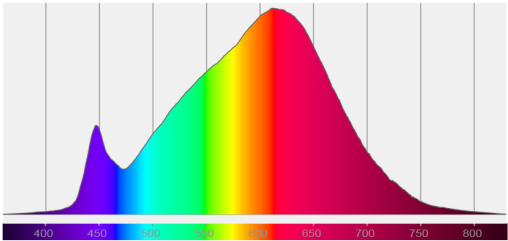
Color distortion



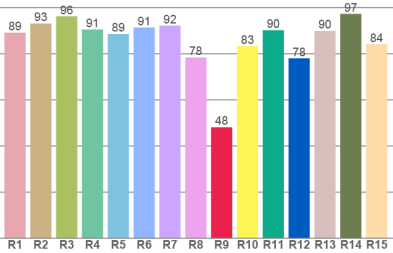
SO6 - 30°



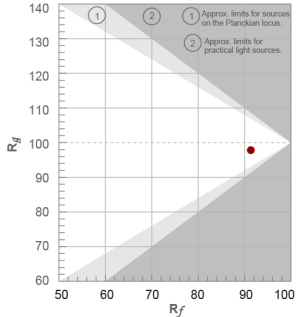
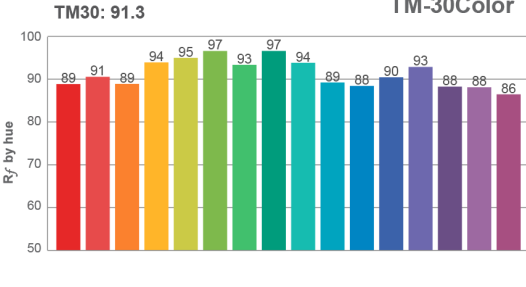
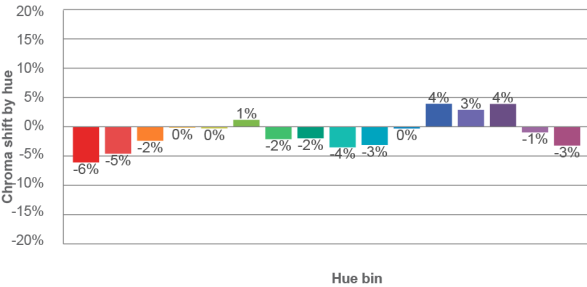
Spectra



CRI: 90.0 (R1-R8)



Color distortion

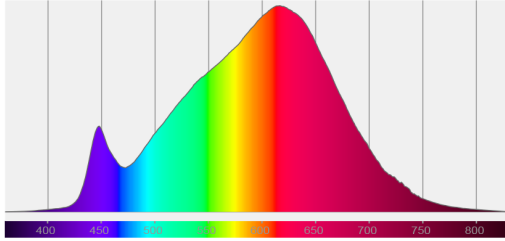


SO6 & SO11

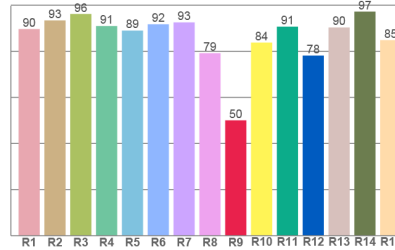
## SO6 - 45°



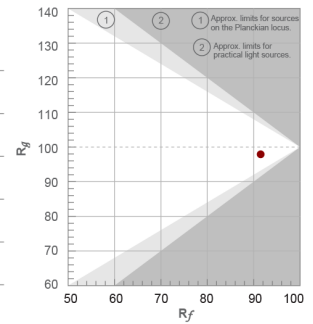
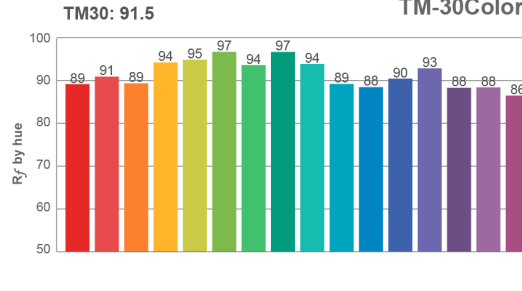
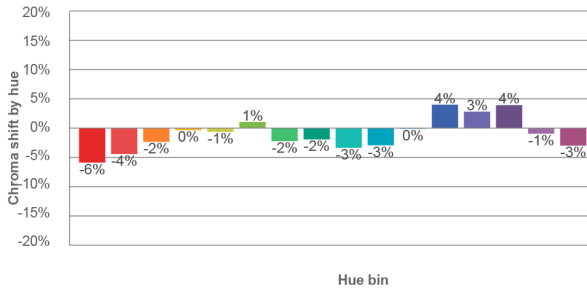
Spectra



CRI: 90.3 (R1-R8)



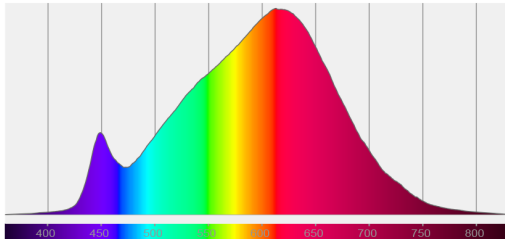
Color distortion



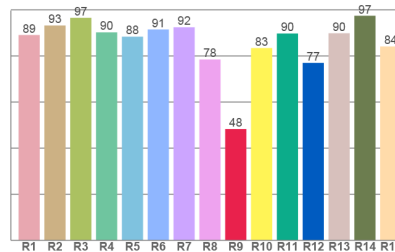
## SO11 - 15°



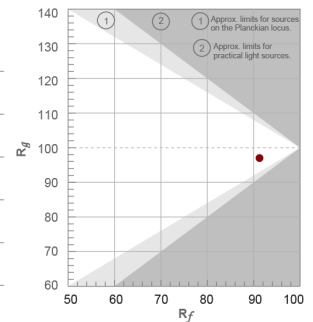
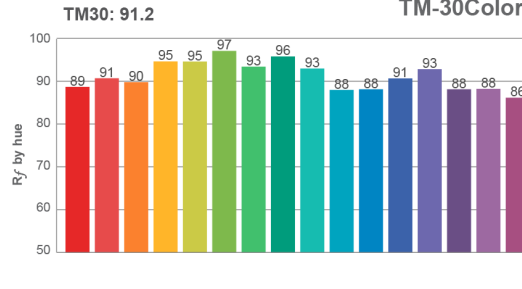
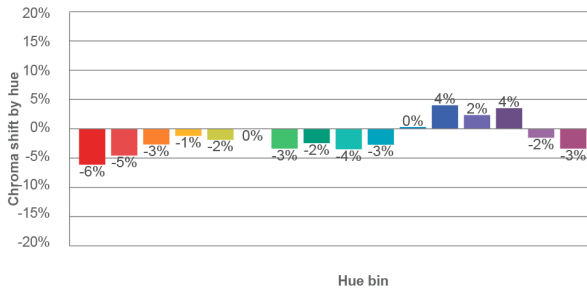
Spectra



CRI: 90.0 (R1-R8)



Color distortion



## SO6 & SO11

SO11 - 30°

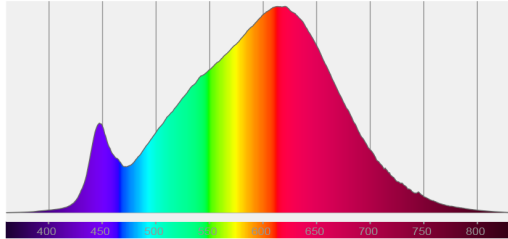
89  
CRI

47  
R9

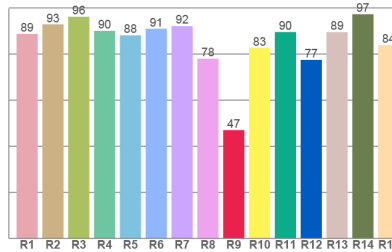
91  
RF

98  
RG

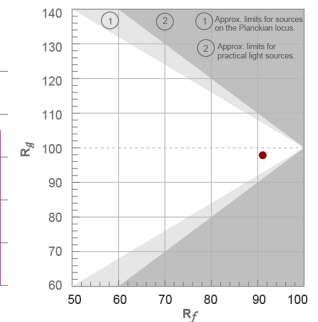
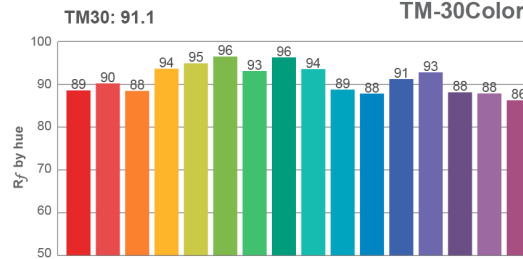
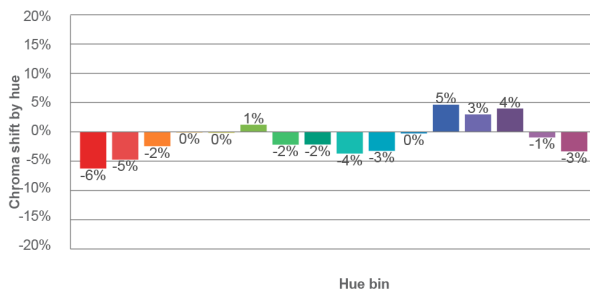
Spectra



CRI: 89.6 (R1-R8)



Color distortion



SO11 - 45°

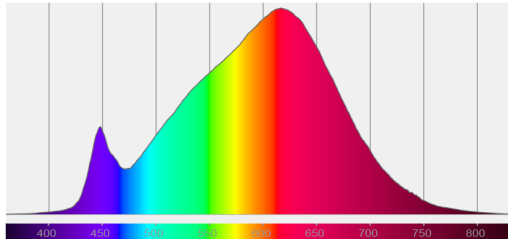
90  
CRI

48  
R9

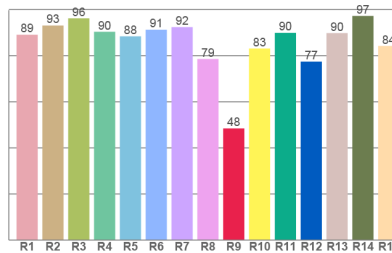
91  
RF

97  
RG

Spectra



CRI: 89.9 (R1-R8)



Color distortion

